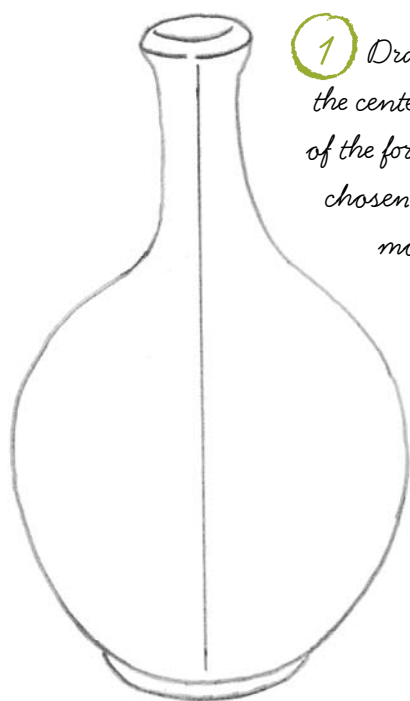
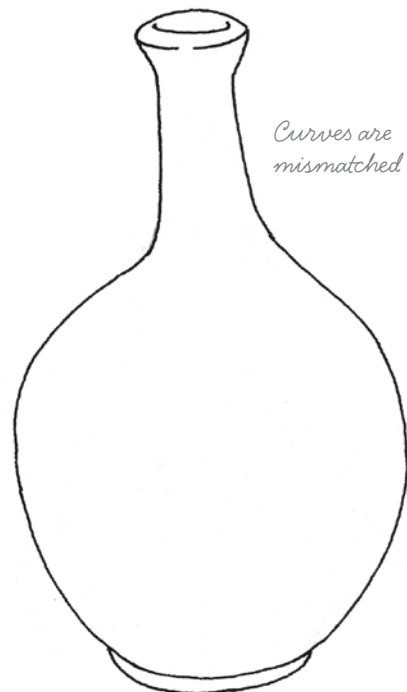


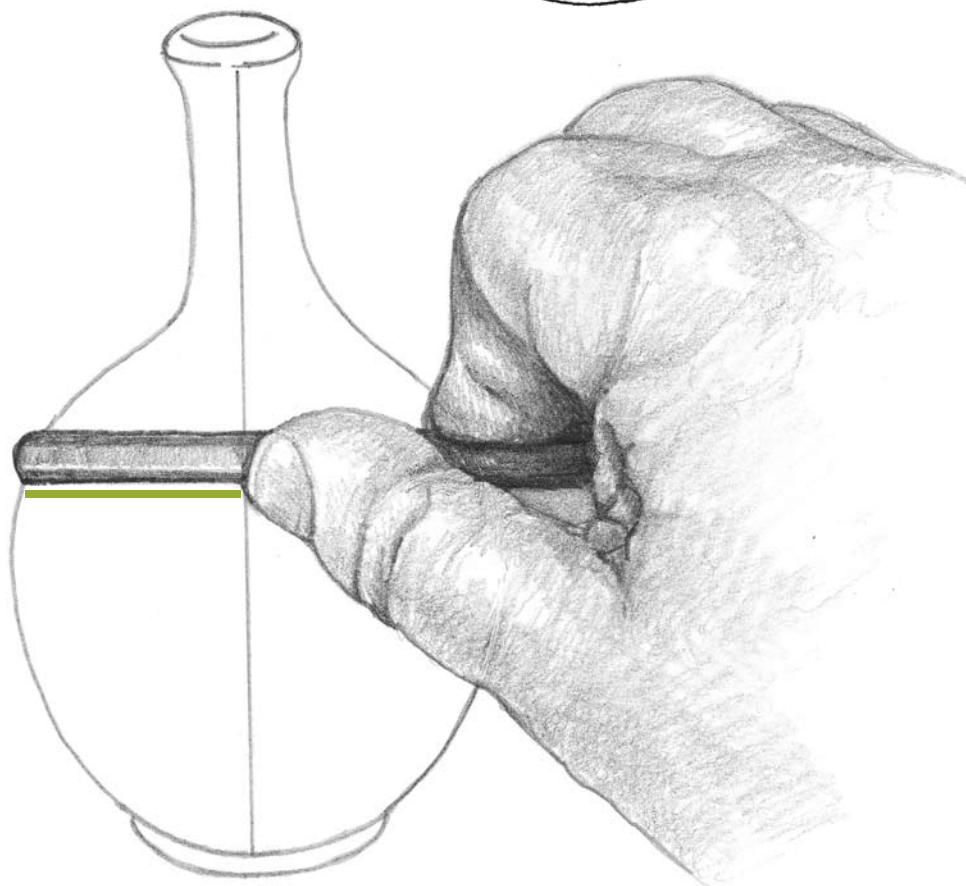
## DRAWING SYMMETRICAL OBJECTS

Hand-sketching a symmetrical object so that the right and left side are mirror images of each other is not an easy task. One is usually more adept at drawing lines and curves on one side of the symmetrical form than on the other. The result often looks a little mismatched, like the ceramic vase shown at right. To bring an object into symmetrical balance, follow the easy steps demonstrated here.

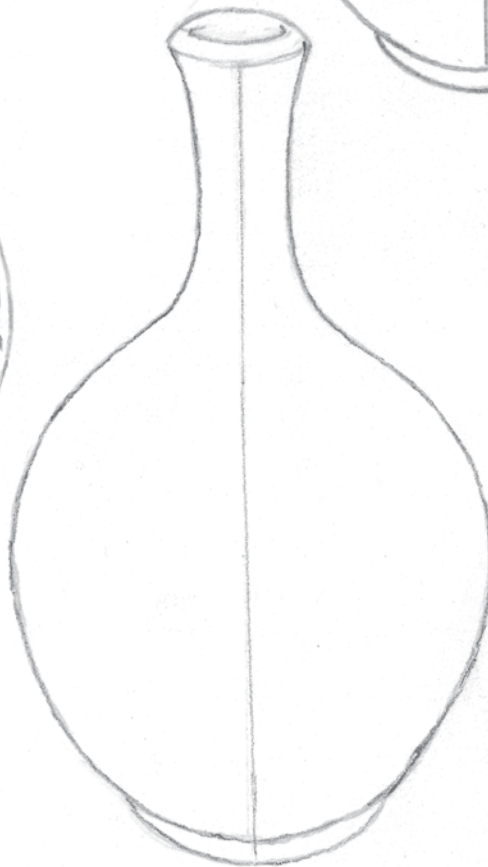
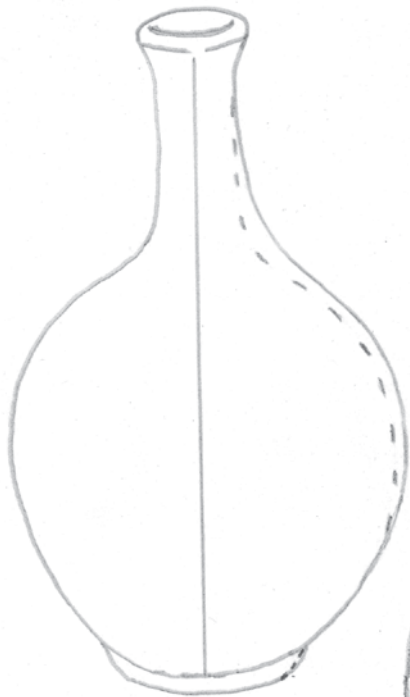
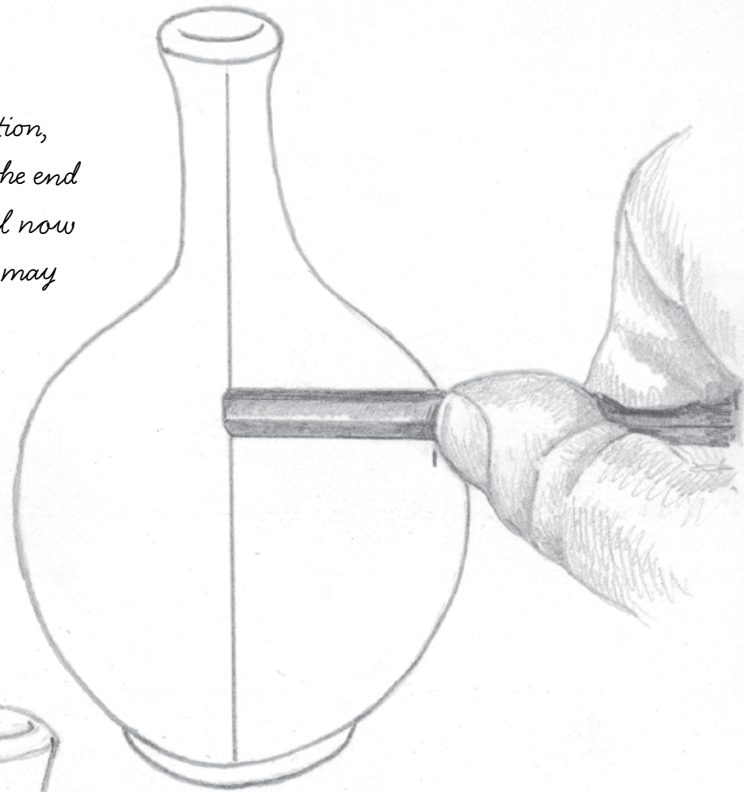


1 Draw a light pencil line through the center of the vase. Decide which side of the form looks the most accurate. I've chosen the left side. We'll refer to the most accurate side as the "model."

2 Working on the model side of the object, line up the end of a pencil with a selected spot located along the outer edge. Place your thumbnail on the pencil so that it lines up with the center mark.



3 Without moving your thumbnail from its position, slide the pencil horizontally across the paper until the end lines up with the center line. Where your thumbnail now rests should be the outer edge of the vase. However, it may actually be inside or outside the edge line. Make a light pencil tick mark where your thumbnail actually rests.



4 Repeat steps 2 and 3 just above and just below the spot you tick-marked. Add more tick marks as you go, mapping the right side of the vase to match the model side.

5 When the mapping is finished, unite the tick marks by a single line and erase the old edge. The vase should now appear symmetrical.