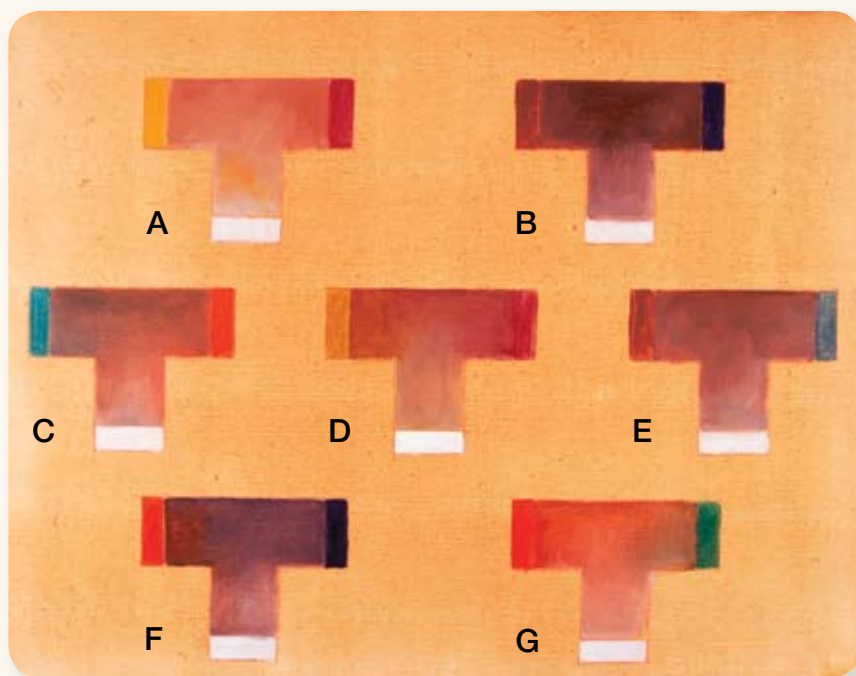


DARK SKIN TONES

There is a wide range of dark skin tones. Colors can range from delicate mochas to golden honeys to rich mahoganies. Some areas, such as lips, may have a deep rose, a soft pink or a subtle violet cast. Palms and soles are often lighter than other areas.

Mixing complements (colors that are opposite each other on the color wheel) makes interesting dark skin shades. Varying the ratio will help give nuance and life. This is a better strategy than simply using paint from a brown tube, which can look flat.



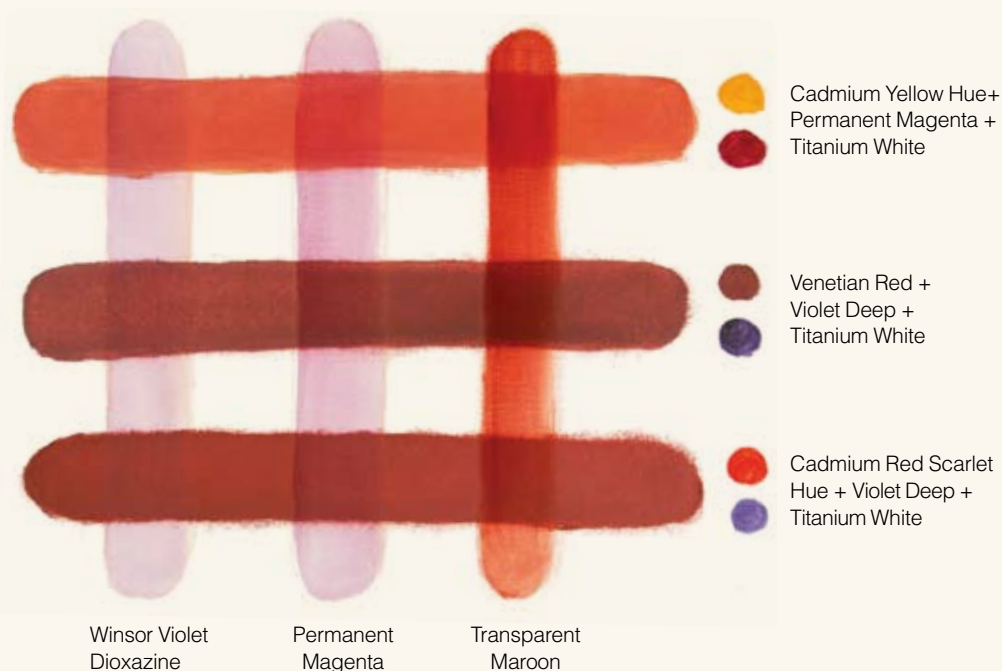
Opaque Chart of Triads

Here are some combinations you can use. Dark skin benefits from colors with strong tinting strength and less white in some areas.

- A. Cadmium Yellow Hue + Winsor Magenta + Titanium White
- B. Venetian Red + Violet Deep + Titanium White
- C. Winsor Blue (Green Shade) + Cadmium Red Scarlet Hue + Titanium White
- D. Green Gold + Winsor Magenta + Titanium White
- E. Venetian Red + French Ultramarine + Titanium White
- F. Cadmium Red Scarlet Hue + Violet Deep + Titanium White
- G. Cadmium Red Scarlet Hue + Winsor Green + Titanium White

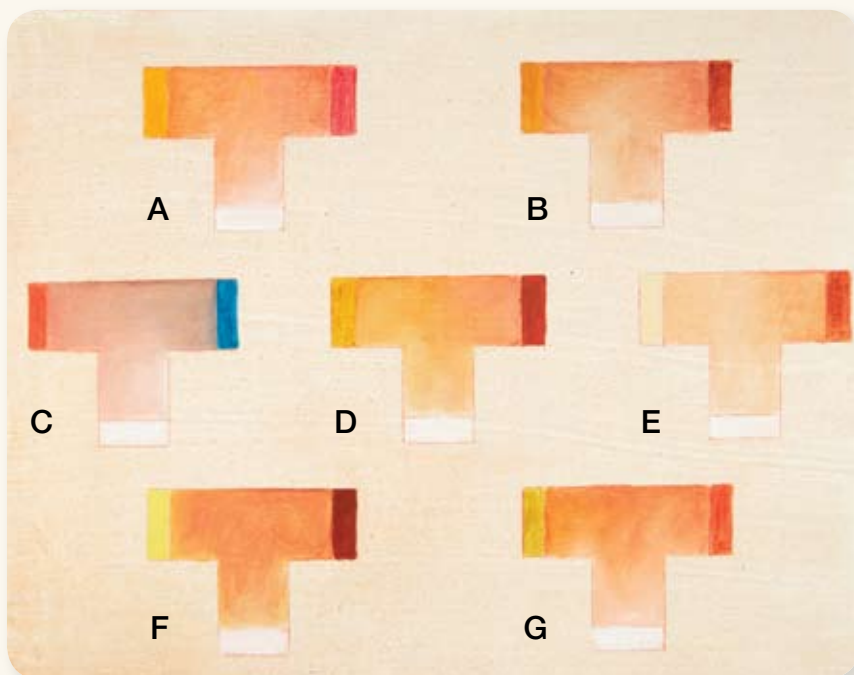
Glaze Chart

After you have painted dark skin tones opaquely, enhance the colors with transparent glazes. Transparent Maroon is one of my favorite glaze colors. It's particularly effective on dark skin. Purples and magentas can be effective in selected areas such as the shadows and lips.



WARM SKIN TONES

Warm skin tones range from palest cream through deep honey to rich browns. There can be a subtle underlying golden hue. Try mixing various yellows with reds or magentas.



Opaque Chart of Triads

Mixing different yellows with different reds and purples yields believable warm skin tones. Yellow and red make orange, and yellow and purple make a neutral brown. Adding Titanium White to these mixtures cools them and makes them more suited for flesh tones.

- A. Cadmium Yellow Hue + Rose Madder Genuine + Titanium White
- B. Yellow Ochre Pale + Transparent Maroon + Titanium White
- C. Cadmium Red Scarlet Hue + Winsor Blue (Green Shade) + Titanium White
- D. Indian Yellow Deep + Terra Rosa + Titanium White
- E. Naples Yellow Light + Burnt Sienna + Titanium White
- F. Bismuth Yellow + Venetian Red + Titanium White
- G. Green Gold + Cadmium Red Scarlet Hue + Titanium White

Glaze and Scumble Chart

Glazes or scumbles can work well over warm skin. Here are some examples. Notice how the yellow glaze warms and the white scumble cools the underlying colors.

